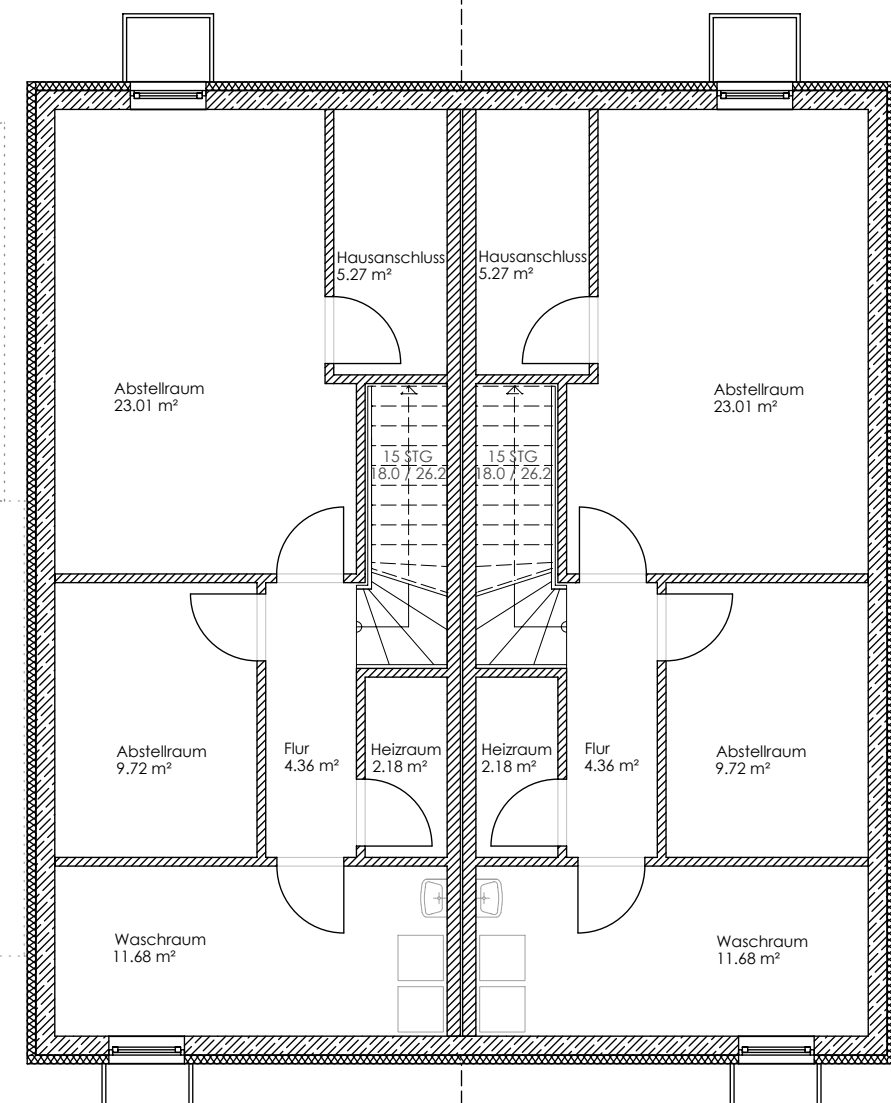
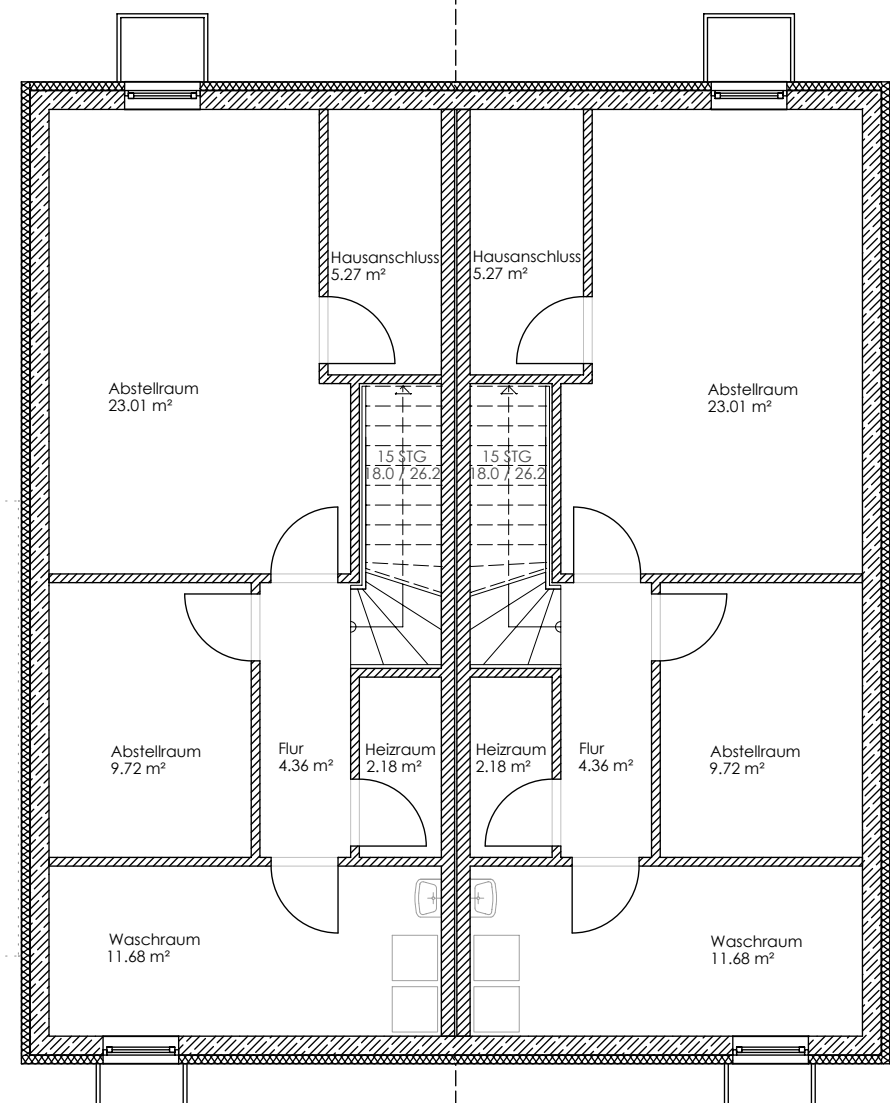
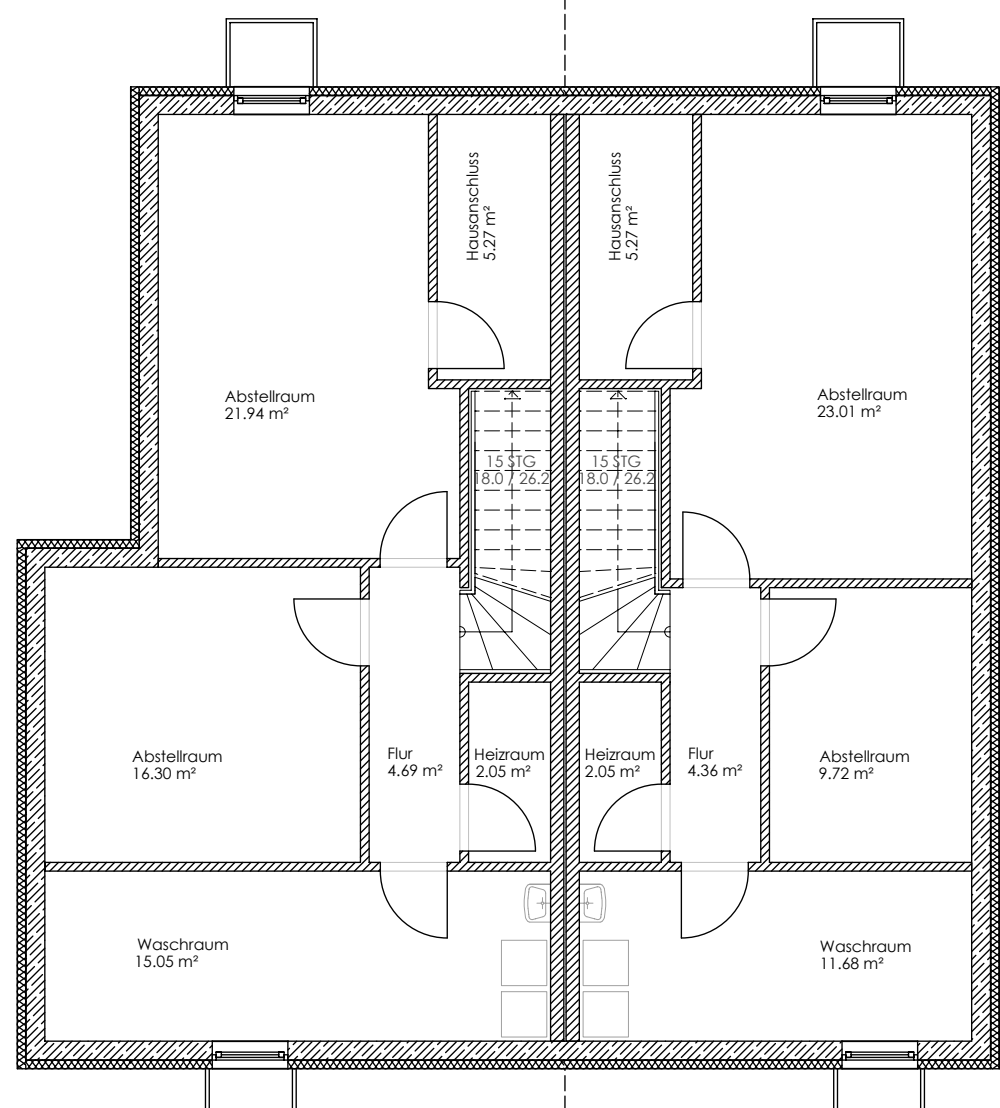
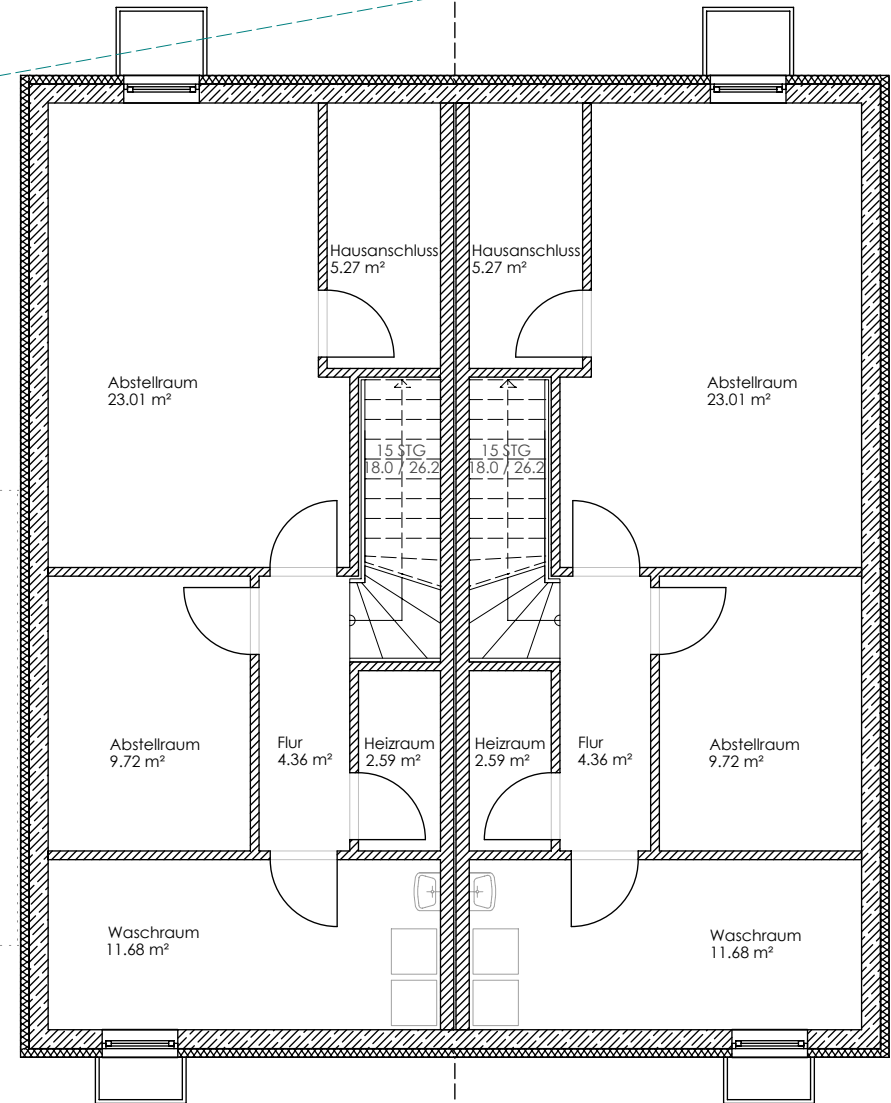
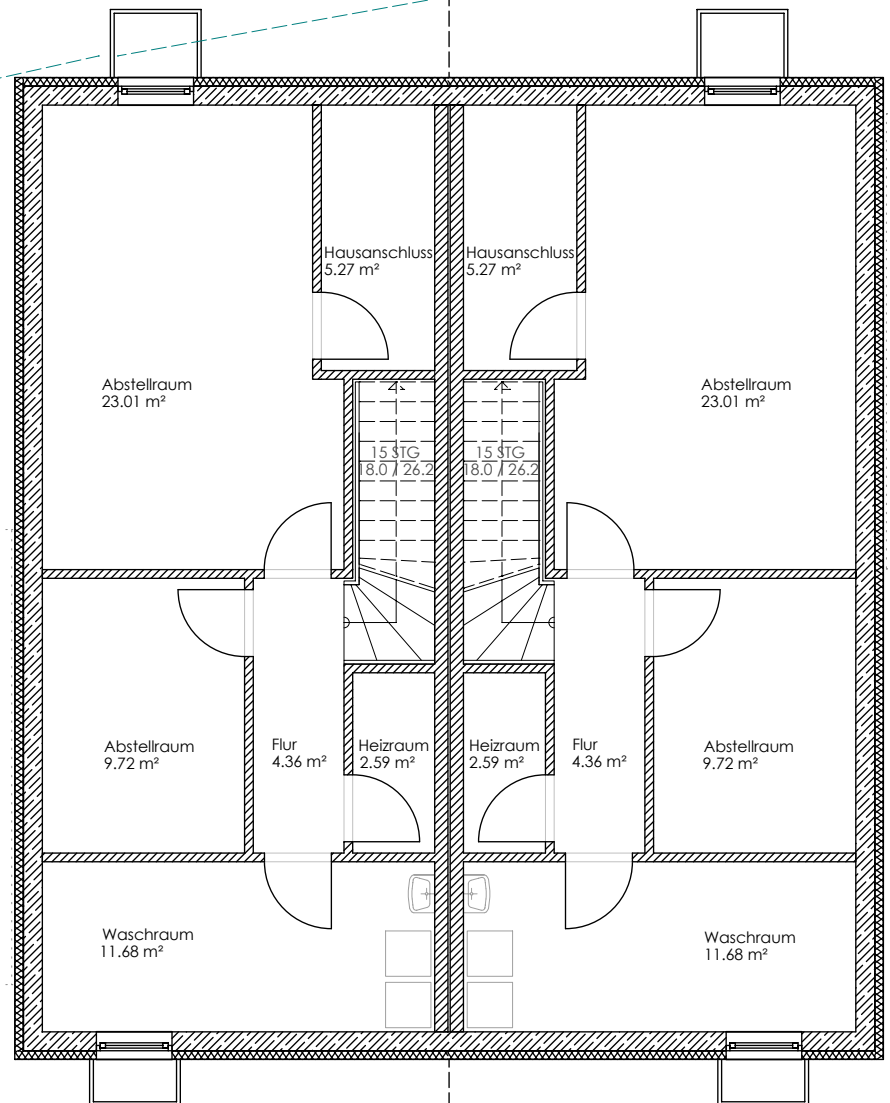
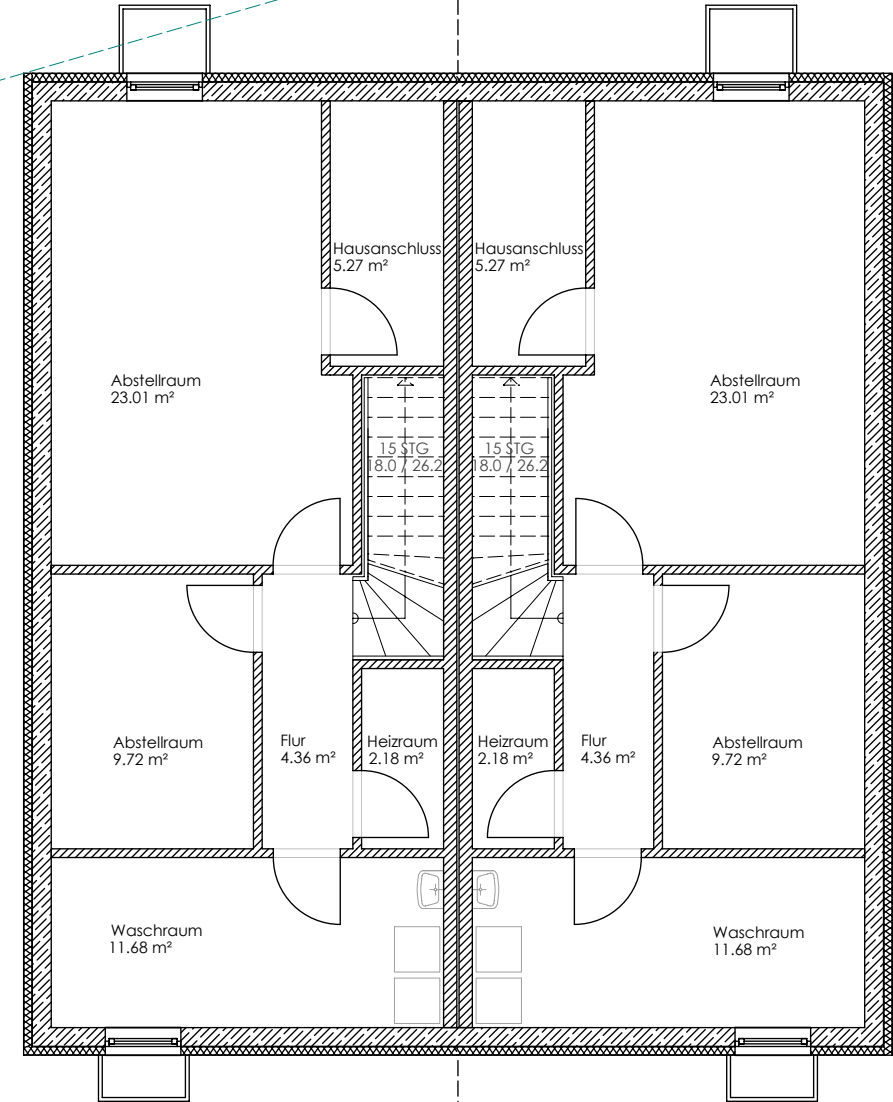


Mitte öffentliche Flächen



GEÄNDERTE FREIANLAGENPLANUNG

NEUBAU VON 6 DOPPELHÄUSERN
MIT GARAGE IN DER UNSERHERRNER STRASSE
IN 85053 INGOLSTADT

GESAMTÜBERSICHTSPLAN KG

1/100

FL.-NR. 670
Unserherrner Straße, 85053 Ingolstadt

BAUHERR

Röss Wohnbau GmbH
Nürnberger Straße 34, 85055 Ingolstadt

PLANUNG

bauer.architekten
+ stadtplanner
MÜNCHENER STRASSE 115 - 85051 INGOLSTADT
Tel: +49 841 97476-0 - Fax: +49 841 97476-66

Ingolstadt, 14.01.2019

